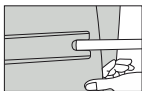
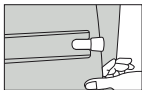


EN INFLATABLE ICE BATH TUB - INSTRUCTION MANUAL

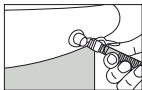
INSTALLATION



1. Find the holes for fixing the frame at the bottom of the bathtub



2. Insert the 6 tubes of the frame into the holes one



3. Stand the bathtub and inflate the upper ring with a pump



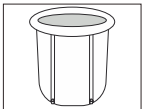
4. Attach the drain valve by tightening it carefully. Remember to turn it off before filling the tub.



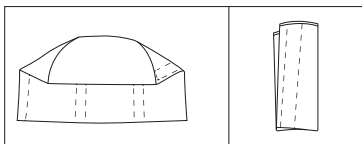
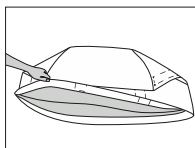
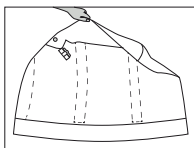
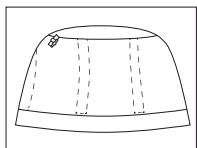
5. Push the valve inward after inflating the top ring



6. To drain the air from the upper ring open the valve and press the center of the valve with the longer part of the plastic cap



7. The tub is ready for use



HOW TO FOLD:

1. Align the edges
2. Fold as shown
3. Hide the inflatable ring inside
4. Fold tightly as shown in the picture

EN

PRECAUTIONS:

- Before using the bathtub for the first time, read the instruction manual carefully.
- If the product was stored in a cold place, warm the product with warm water before the first use. Installation can be carried out only after the material has been warmed and softened to avoid possible damage.
- Wash the inside of the tub with water before the first use.
- The air ring should not be over-inflated to prevent it from breaking.
- Please drain the water after use, long-term storage of the tub filled with water will shorten the life of the product and may lead to deformation.
- Do not use the bathtub after drinking alcohol, feeling drowsy or taking any sedatives.
- Do not sleep while using the tub - danger of drowning.
- Do not use electronic devices while using the bathtub.

- The elderly, children or people with special needs should be watched at all times and never left unattended. The product is not intended for infants.
- People who have difficulty getting in and out of the tub should ask for help.
- Keep the product away from sources of fire and sharp objects.
- The product is intended for outdoor use or in rooms equipped with a water drain - danger of flooding.
- Never fill the tub with water at a temperature higher than 50°C.
- Do not fill the tub with water above 2/3 of its volume, remember that the water level will rise when you enter the tub.
- Do at least a 10-minute warm-up before entering cold water.

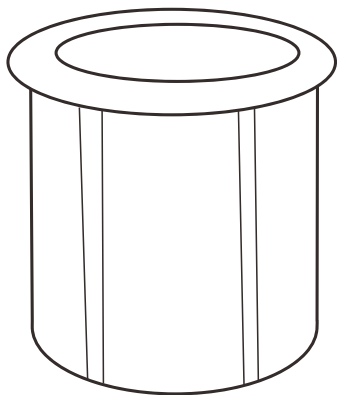
CONTRAINDICATIONS:

Heart or kidney disease hemophilia, varicose veins, epilepsy, Lyme disease, hypertension, peripheral vascular disease, infections of any kind, cold, flu, allergy to any of the materials, decreased perception. Women during pregnancy or menstruation.

If in any doubt, consult a doctor before using the product.

UNDESIRABLE SYMPTOMS:

Note that immersion in cold water may cause adverse symptoms such as dizziness, nausea, numbness or cramps in the limbs, tightness in the chest. You should then take a short break and try again. If symptoms recur or are severe, stop bathing immediately and consult a doctor before using again.



EN INFLATABLE ICE BATH TUB - INSTRUCTION MANUAL